

# Safeguard Your Research

## VERIFYING ONLINE GENEALOGY SOURCES

Don't assume everything you find on the Internet is reliable. Everyone, even professional genealogists, makes mistakes. If you find an online "match" to your family history, it is very important to find the actual **source** of the information. Consider the information as a clue and verify everything!

1. Look for the source of the information provided.
2. Retrace the steps of the researcher.
3. Find the cited source yourself.
4. Evaluate the source.
5. Contact the researcher.
6. Resolve conflicting sources.
7. *Always* cite your sources.



Reliable **SOURCES** are: vital records, documents, books, census records, oral histories, etc.

An excellent article by Donna Przecha titled Preserving Your Research is available online at [www.genealogy.com/67\\_donna\\_print.html](http://www.genealogy.com/67_donna_print.html)

Most of us interested in genealogy enjoy the hunt for those elusive family members and their related documents! This article points out the importance of preserving your work and making sure it is stored in multiple formats, whether paper or electronic. Can you guarantee your work will last for 100 years? Backing up your data is a first step to preserving your hard earned research!

**Keep up to date with the latest genealogy tips and tricks!** Try these sites!

<http://genealogy.about.com>

[www.familytreemagazine.com](http://www.familytreemagazine.com)

[www.freewebs.com/researchguides](http://www.freewebs.com/researchguides)

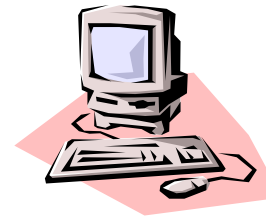
<http://genealogyblog.com>

### ALGONQUIN AREA PUBLIC LIBRARY

2600 Harnish Drive  
Algonquin, Illinois 60102  
Phone: 847-458-6060  
Fax: 847-458-9359

ALGONQUIN AREA PUBLIC LIBRARY

24/7  
ONLINE  
GENEALOGY @  
YOUR LIBRARY



[www.aapl.org](http://www.aapl.org)

Compiled by Virginia Hanes Freyre  
Fall 2004

# ONLINE RESEARCH STEPS

1. Use major genealogy websites
2. Establish an email account  
(yahoo or hotmail are free!)
3. Use more than one search engine  
[www.altavista.com](http://www.altavista.com) [www.dogpile.com](http://www.dogpile.com)  
[www.alltheweb.com](http://www.alltheweb.com) [www.lycos.com](http://www.lycos.com)  
[www.wisenut.com](http://www.wisenut.com) [www.hotbot.com](http://www.hotbot.com)
4. Use lowercase letters when searching
5. Sign up on appropriate mailing lists, i.e. surname, location, ethnic groups
6. Post *effective* queries on message boards and be specific! A *bad* example is... "I'm looking for Joe Smith."
7. Verify online information with offline real documentation.

Link to our home page for genealogy sites.

Go to: [www.aapld.org](http://www.aapld.org)

Then choose:

- \* Adult Services
- \* Genealogy Resources
- \* Genealogy Workshops  
(workshop presentations)
- \* Online Genealogy Resources  
(selected websites)

**Ancestry Plus** (in the library only)  
**Heritage Quest** (home access with  
Algonquin library card)

## POPULAR ONLINE WEBSITES

### GENERAL GENEALOGY PORTALS

[www.archives.gov](http://www.archives.gov)  
[www.cyndislist.com](http://www.cyndislist.com)  
[www.linkpendium.com](http://www.linkpendium.com)  
[www.rootsweb.com](http://www.rootsweb.com)



### NEWSPAPERS & OBITUARIES

[www.newslibrary.com](http://www.newslibrary.com)  
[www.legacy.com](http://www.legacy.com)



### IMMIGRATION /NATURALIZATION

[www.ellisland.org](http://www.ellisland.org)  
[www.genesearch.com/ports.html](http://www.genesearch.com/ports.html)



### LAND & GEOGRAPHY

[www.alookatcook.com](http://www.alookatcook.com)  
[www.rootsweb.com](http://www.rootsweb.com)  
[www.usgenweb.org](http://www.usgenweb.org)



### CITY DIRECTORIES

[www.distantcousin.com](http://www.distantcousin.com)  
**Ancestry Plus**  
**Heritage Quest**



### ETHNIC SPECIFIC

[www.genline.com](http://www.genline.com)



### VITAL RECORDS

[www.vitalrec.com](http://www.vitalrec.com)  
[www.sos.state.il.us/departments/archives](http://www.sos.state.il.us/departments/archives)  
[www.cyberdriveillinois.com](http://www.cyberdriveillinois.com)



### FAMILY PEDIGREES ONLINE

[www.gencircles.com](http://www.gencircles.com)  
[www.familysearch.org](http://www.familysearch.org)  
[www.genealogy.com](http://www.genealogy.com)



### CENSUS RECORDS

[www.ancestry.com](http://www.ancestry.com)



Ancestry Plus & Heritage Quest @ the Library!

### GOOGLE SEARCH TIPS FROM

KIMBERLY POWELL\*

1. [www.google.com](http://www.google.com)
2. Use a plus sign (+) before words that are critical to your search
3. Use quotation marks around any two or more words . Great when searching for proper names!
4. Suggest alternate spellings
5. Find related sites by using the "similar pages" link.
6. Find pictures using "image search"
7. Find people by entering first and last name, city and state to find a phone #.
8. Advanced search allows restricting search and results to one website.

\*Full article titled [Googling Genealogy Style: 12 Google Search tips for Genealogists online](http://genealogy.about.com/library/print/n052902a.htm)  
<http://genealogy.about.com/library/print/n052902a.htm>

## ALGONQUIN AREA PUBLIC LIBRARY

2600 Harnish Drive  
Algonquin, Illinois 60102  
Phone: 847-458-6060  
Fax: 847-458-9359